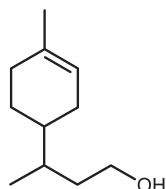


Floral

# CYCLOMETHYLENE CITRONELLOL

937001



3-Cyclohexene-1-propanol,  
.gamma.,4-dimethyl-

## REFERENCES

CAS number: **0015760-18-6**

FEMA number: -

REACH number: **01-2120030217-69**

Stabilizer: **None added**

Solvent: **None added**

Firmenich code: **937001**

## Tenacity

Lasts 1 week  
on a smelling strip.



1 month

3 weeks

2 weeks

1 week

4 days

3 days

2 days

1 day

6 hours

3 hours

2 hours

1 hour

## OLFACTIVE NOTE

Soft floral note which relates closely to the petal character of muguet and rose.

## PERFUMERY USAGE

CYCLOMETHYLENE CITRONELLOL can give soft floral effects in a very wide range of perfume types. Does not give a definite character of its own but develops and harmonizes the individual notes of almost any perfume.

## PHYSICO-CHEMICAL PROPERTIES

appearance	colourless liquid
flashpoint	>100°C
vapour pressure	0.19 Pa at 20°C
purity	min 98%
log p (calculated)	3.79
molecular weight	168

## STABILITY & PERFORMANCE

RECOMMENDED APPLICATIONS	STABILITY	TYPICAL % USE	SUBSTANTIVITY & REMARKS	
<b>fine fragrances</b>	■■■	traces - 0.5%	<b>Top and heart note</b>	
<b>shampoo</b>	■■■■	0.5 - 5%	wet: ■■■■	dry: ■■■
<b>shower gel</b>	■■■	0.5 - 5%	bloom: ■■■	
<b>soap</b>	■■■	0.5 - 5%	foam: ■■	dry hand: ■■
<b>detergent</b>	■■■	0.5 - 5%	wet: ■■■■	dry: ■
<b>softener</b>	■■■	0.5 - 5%	wet: ■■■	dry: ■■
<b>APC</b>	■■	0.5 - 5%	-	
<b>candle</b>	■■	0.5 - 5%	cold wax: ■■	burning: ■■